



WHMS News



Tuesday, February 14

B Day Schedule



PLEDGE OF ALLEGIANCE

I pledge allegiance to the
Flag of the United States of
America, and to the
Republic for which it
stands, one Nation under
God, indivisible, with liberty
and justice for all.

Moment of Silence





WORLD'S FINEST CHOCOLATE



World's Finest Chocolate bars are available for purchase in the library for \$1. We have milk chocolate, dark chocolate, caramel, almond, crisp, or wafer bars.

Proceeds go to the 8th grade Boston trip and the Beta Club National Convention.



SNOW CONES DURING LUNCH

Beta Club will be selling
snow cones during lunch
tomorrow for \$2.

BETA MEETING CANCELLED

Beta Club for tomorrow
morning is cancelled!

Track Team 2022-23

Practices will be Monday,
Tuesday, and Thursday from
3:45-5:00 starting Monday,
2/13.

There will have a mandatory
parent meeting next week.

STUDENT LIFE

Athletics

Clubs and Activities

Performance Arts

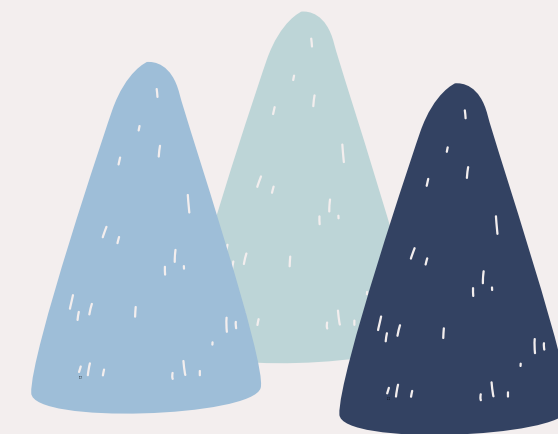
Visual Art

WINTER WONDERLAND DANCE

When: Friday, 2/17 from 5:30-7:30

*Winter
Wonderland*

Cost \$5



**Tickets are on sale from 8:00-8:25 in the
front office lobby.**

BRIGHTBYTES STUDENT SURVEY

The BrightBytes Student Survey needs to be completed by Tuesday, February 14 during advisory time.

The screenshot shows a web interface for the BrightBytes Student Survey. On the left is a dark sidebar with the KCS (Knox County Schools) logo at the top. Below the logo are icons and labels for 'Account', 'Admin', 'Dashboard' (highlighted in blue), 'Courses', 'Calendar', 'Inbox' (with a '209' notification badge), 'History', 'Commons', 'Mastery' (with a '10' notification badge), and 'Halls Middle School'. The main content area has a white background. At the top, it says 'For Students ONLY: BrightBytes Survey' next to a close button (X). Below this is the 'BrightBytes' logo, which consists of a stylized 'B' made of two overlapping circles (one blue, one yellow) followed by the text 'BrightBytes' in blue. An information icon (i) is to the left of a paragraph of text: 'Knox County Schools is partnering with BrightBytes, an educational research organization, to learn more about your technology access and use for learning as a student. Student participation is essential in helping the district form a more complete picture of technology use for learning in our students' lives. The last day to complete this questionnaire is **February 14**. Please wait until the educators at your school instruct you to take the survey found at this link.' Below the text is a link for 'Halls Middle School: <http://www.bbyt.es/AM3KM>' with an external link icon. At the bottom of the message box, it says 'This is a message from HALLS MIDDLE SCHOOL'. Below the message box is a 'Dashboard' section with a vertical ellipsis menu icon. Under 'Dashboard' is a section titled 'Published Courses (15)'. Below this are three course cards. The first card has a red and white checkered background and says 'HMS Student' with a green three-dot menu icon. The second card has a red background with a white 'H' and says 'Dr. Bennett 7th Grade' and 'Math Intervention' with a red three-dot menu icon. The third card has a dark background with a yellow and red circular logo that says 'NATIONAL CONVENTION' and 'NATIONAL B' with an orange three-dot menu icon.

KCS
KNOX COUNTY SCHOOLS

Account

Admin

Dashboard

Courses

Calendar

Inbox 209

History

Commons

Mastery 10

Halls Middle School

For Students ONLY: BrightBytes Survey

BrightBytes®

Knox County Schools is partnering with BrightBytes, an educational research organization, to learn more about your technology access and use for learning as a student. Student participation is essential in helping the district form a more complete picture of technology use for learning in our students' lives. The last day to complete this questionnaire is **February 14**. Please wait until the educators at your school instruct you to take the survey found at this link.

Halls Middle School: <http://www.bbyt.es/AM3KM>

This is a message from HALLS MIDDLE SCHOOL

Dashboard

Published Courses (15)

HMS Student

Dr. Bennett 7th Grade

Math Intervention

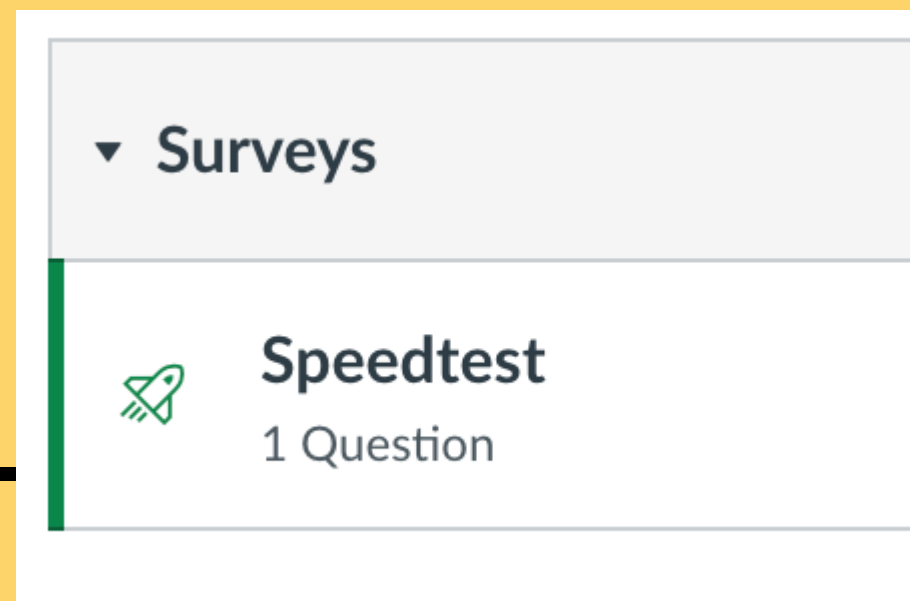
NATIONAL CONVENTION

NATIONAL B

BRIGHTBYTES STUDENT SURVEY

There is also a Quiz on the HMS Student Canvas Page. **The quiz MUST be completed at home.** Complete the internet Speedtest and then type your name and Submit the survey.

Go to the Student Canvas course, click Quizzes, and then Speedtest assignment. Follow the directions.



early Release Wednesday

Students will dismiss at 1:30PM on Wednesday, 2/15. If you are a car rider, make sure your ride knows school is out at 1:30.



Students are encouraged to dress up in 20's attire.



SPIRIT STORE CASH SALES

The Spirit Store will be
OPEN this week.

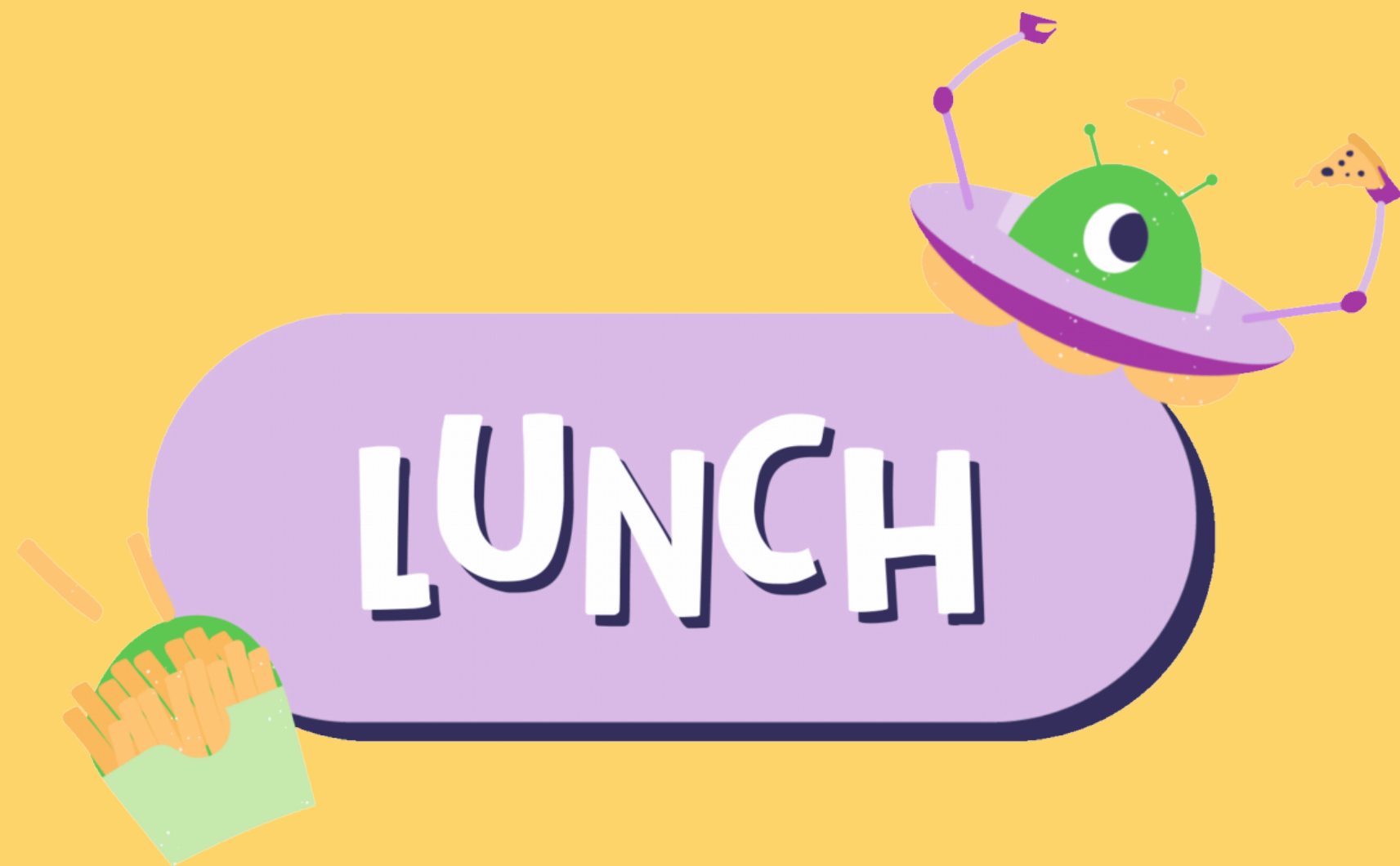
Tuesday - 8th grade
Wednesday - 7th grade
Thursday - 6th grade



LOANER CHROMEBOOKS



There will be NO LOANER Chromebooks today. Make sure you bring your Chromebook to school fully charged. Otherwise, call/text someone to bring it!



Know your
student ID
number!

February 14th

Choose 1 Entrée

3 WG Max Cheese Sticks (48) w/ $\frac{1}{4}$ cup
Marinara Dipping Sauce (3)

Hot Ham and Cheese Sandwich (34)

Grilled Chicken (1) Salad w/ WG Roll (32)

Side Item

Tater Tots (19)

California Blend Mixed Vegetables (5)

Garden Salad (2)

Veggie Nibbles (5)

IT'S WHAT WE DO HERE



**Serve
others & Strive for
greatness**

**In all that
you do.**

